

TRIADE MAXI

TRIADE MAXI is the concealed mounting bracket for shelves minimum 40mm thick. It has been conceived to simplify the shelf installation. It is provided with three independent adjustments:

1) VERTICAL

Before installing the shelf, the mounting brackets can be adjusted in height and (vertically) aligned through the slots.

2) HORIZONTAL

While placing the shelf in position, the supporting pins can be slid horizontally.

3) INCLINATION

When the shelf is partially inserted, the shelf angle can be adjusted front to back by turning the supporting pins with a 12mm open-ended wrench.

The capacity loading is 20Kg each (shelf weight included) for a shelf max 400mm deep.

Shelf minimum depth: 200mm.

Zinc alloy and steel

40 mm min.



20 kg for each shelf support
for shelf 400 mm deep

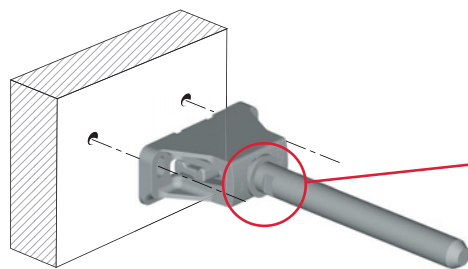


PAT. PENDING



INSTALLATION AND ADJUSTMENTS

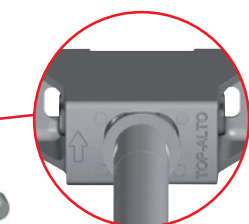
WOOD PANEL



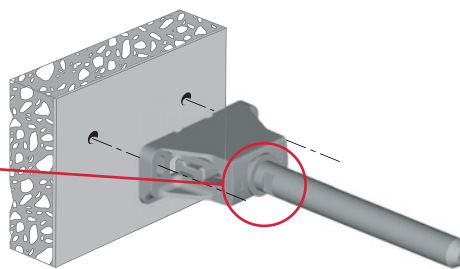
Recommended fixing pan head
screw type - head Ø 5 mm max.

VERY IMPORTANT

Triade Maxi has to be installed
with the arrow facing upwards.



SOLID AND PLASTERBOARD PANEL

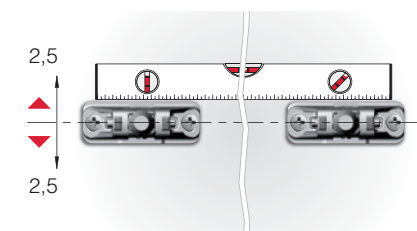


It is the responsibility of the customer:

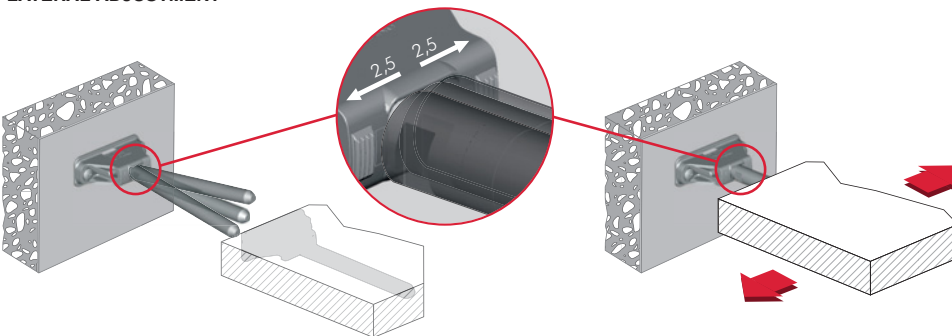
- to ensure the wall is of a suitable quality to hold the shelf fixing in place.
- to use the proper hardware fittings according to the construction of the wall.

For more specific information, please refer to the WARNINGS section at the end of the catalogue.

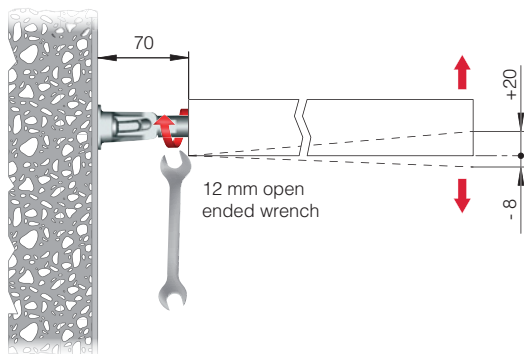
BRACKET ALIGNMENT



LATERAL ADJUSTMENT

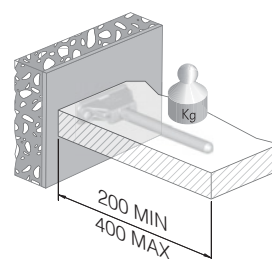
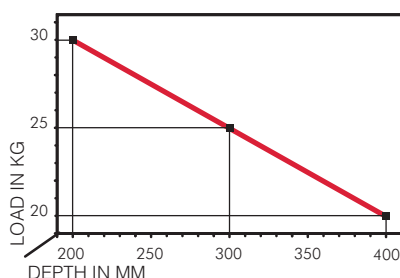


INCLINATION ADJUSTMENT



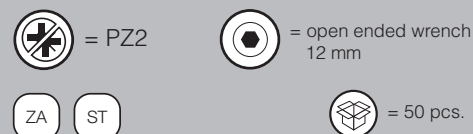
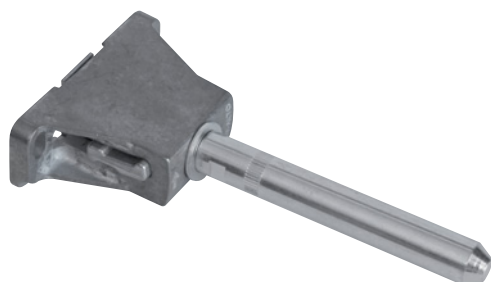
COMBINATION SHELF LOAD AND SHELF DEPTH

(The figures refer to 1 shelf support)

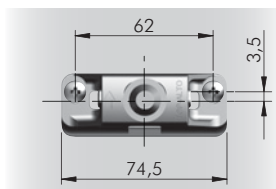
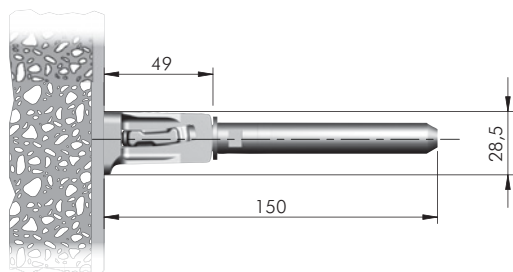


+ shelf weight = 20 kg MAX
for each shelf support

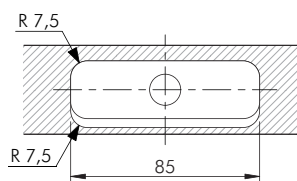
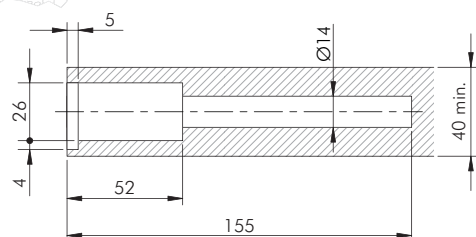
For installation details refer to "APPLICATION FOR ALL TRIADE VERSIONS"



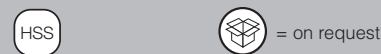
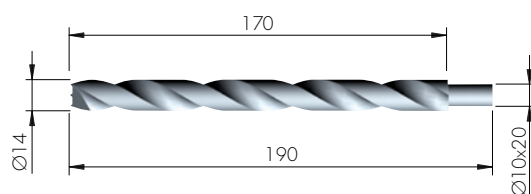
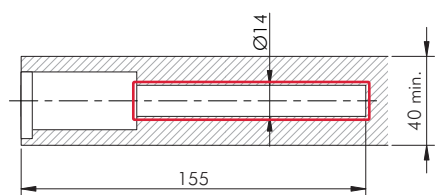
1621601000



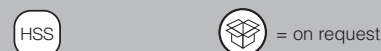
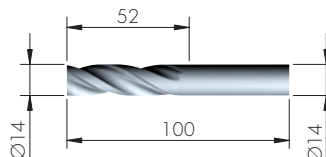
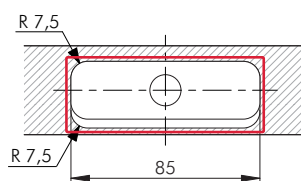
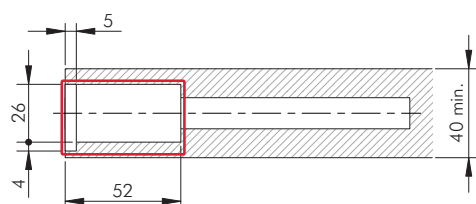
VERY IMPORTANT
Centre of the hole is
shifted 3,5 mm upwards.
Please keep in mind
when levelling the shelf.



DRILL BIT FOR TRIADE MAXI



1621452000



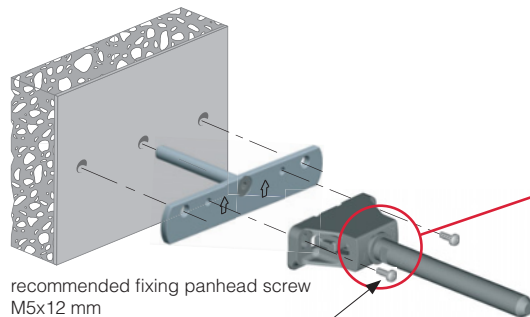
1621454000



TRIADE MAXI AND BRACKET

INSTALLATION

SOLID AND PLASTERBOARD PANEL



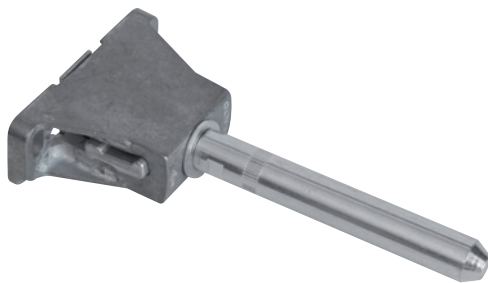
VERY IMPORTANT

Triade has to be installed with the writing
"TOP - ALTO" facing upwards.

It is the responsibility of the customer:

- to ensure the wall is of a suitable quality to hold the shelf fixing in place.
- to use the proper hardware fittings according to the construction of the wall.

For more specific information, please refer to the WARNINGS section at the end of the catalogue.



= PZ2



= open ended wrench
12 mm



= 50 pcs.



1621601000



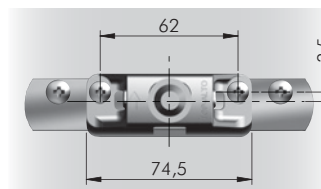
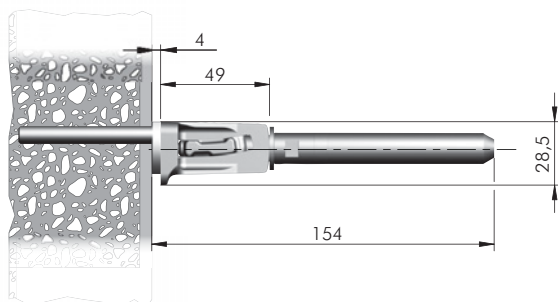
= M5



= 100 pcs.

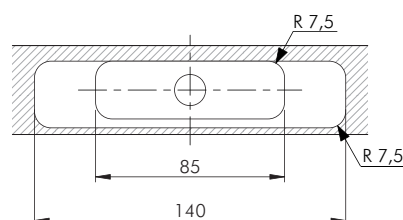
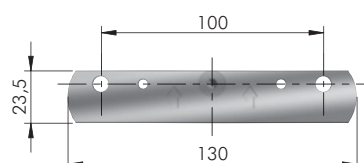


16215030ZN



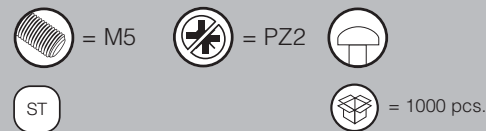
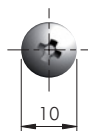
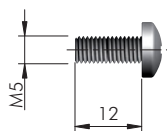
VERY IMPORTANT

Centre of the hole is
shifted 3,5 mm upwards.
Please keep in mind
when levelling the shelf.



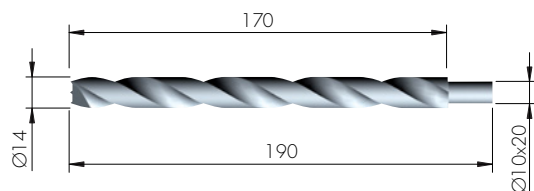
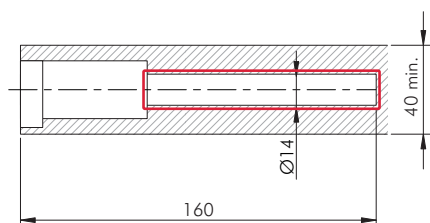


TRIADE MAXI BRACKET FIXING ACCESSORY



60334030ZN

DRILL BIT FOR TRIADE MAXI AND BRACKET

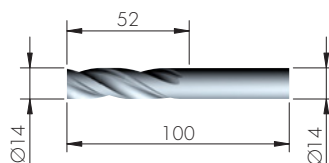
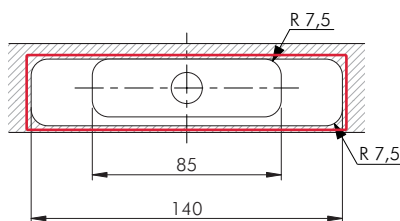
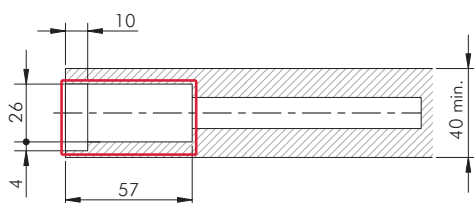


HSS

= on request



1621452000



HSS

= on request

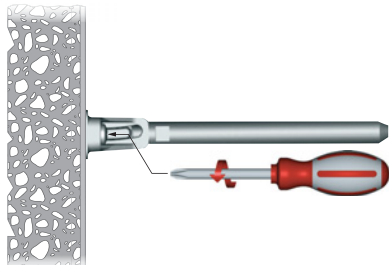


1621454000

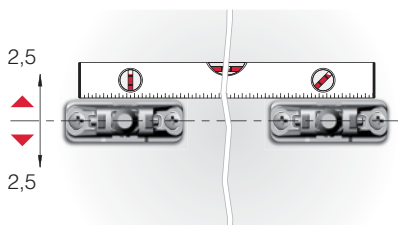
APPLICATION FOR ALL TRIADE VERSIONS

VERTICAL ADJUSTMENTS

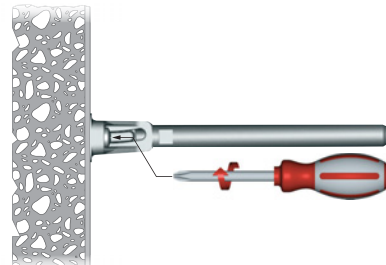
RELEASE THE FIXING SCREWS



ALIGN BRACKETS VERTICALLY ACCORDINGLY

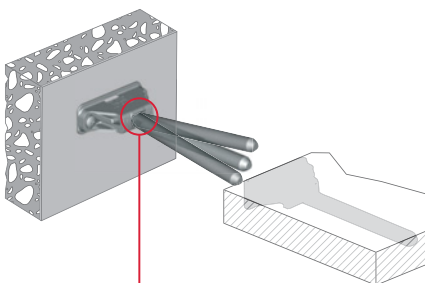


TIGHT THE FIXING SCREWS

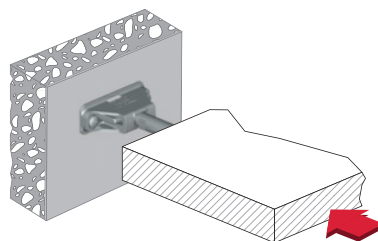


SHELF INSERTING AND LATERAL ADJUSTMENT

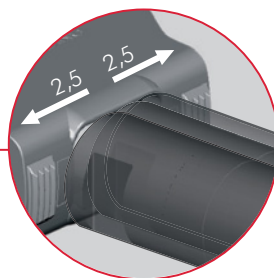
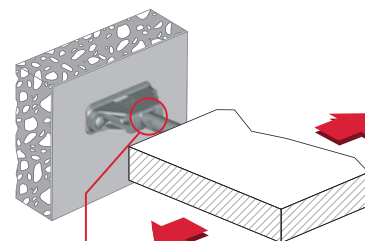
TILT THE SHELF TO MATCH BOTH SUPPORTING
PINS AND SHELF HOUSINGS



INSERT PARTIALLY THE SHELF

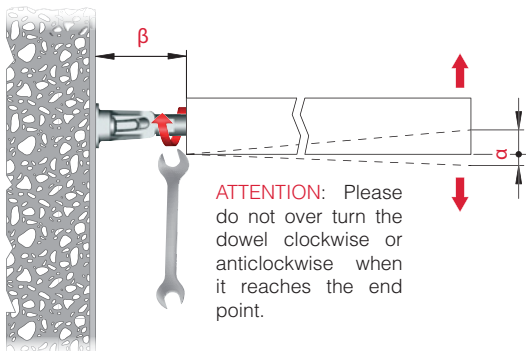


ADJUST THE SHELF Laterally ACCORDING TO
THE APPLICATION (i.e. MULTI-SHELF COMPOSITION)



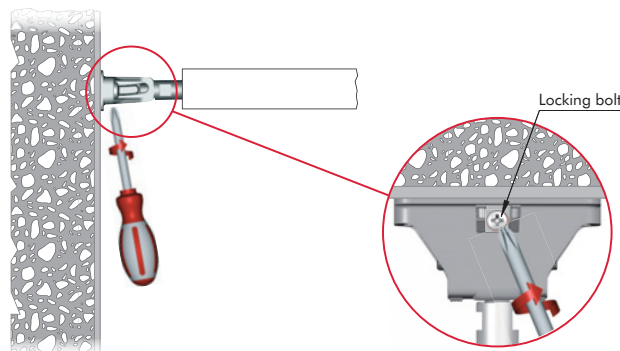
INCLINATION ADJUSTMENTS

TURN CLOCKWISE THE SUPPORTING PIN WITH A 10 - 12 mm OPEN-ENDED
WRENCH TO ADJUST THE SHELF ANGLE FRONT TO BACK ACCORDINGLY



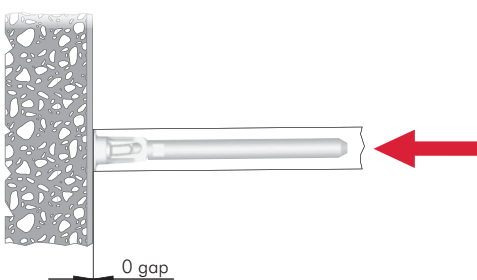
MODEL	β(mm)	α(mm)
TRIADE MINI	approx. 45	-6 +13
TRIADE	approx. 45	-6 +13
TRIADE MAXI	approx. 70	-8 +20
TRIADE XXL	approx. 70	-8 +20

SCREW THE LOCKING BOLT TO BLOCK THE PIN



SHELF INSERTING FOR ALL TRIADE MODELS

PUSH THE SHELF AGAINST THE WALL UNTIL THE END



SHELF INSERTING FOR TRIADE MODEL ONLY, WITH DRILLING PLAN FOR SHELVES 25-29 mm THICK

PUSH THE SHELF AGAINST THE WALL UNTIL THE END

